

To launch a CD from a terminal that only has Meditech and Intranet access

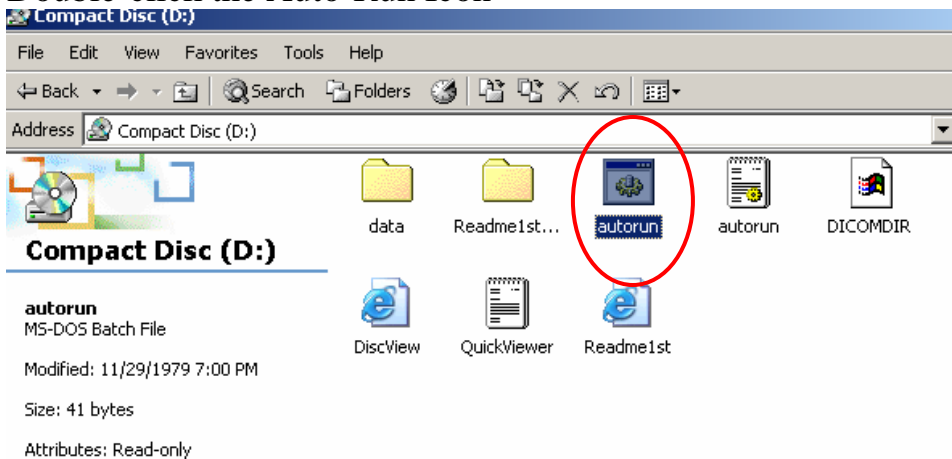
1. Insert CD into CD-Rom drive
2. If the CD you've placed in the does not run automatically, please go to the My Computer Icon on the desktop
3. Double-click My Computer



4. Double-click Compact Disk (D:)



5. Double-click the Auto-Run Icon



6. CD will run

Please call the MIS helpdesk if you have any issues x5090